

2 bedroom purpose-built apartment

£1,450 pcm



Full Description

This two double bedroom second floor apartment offers an open-plan living room and kitchen which leads to a south facing balcony. The master bedroom benefits from an en-suite which is then followed by a further bathroom and double bedroom. The apartment also provides one allocated parking space with access to the apartment via a lift or stairs.

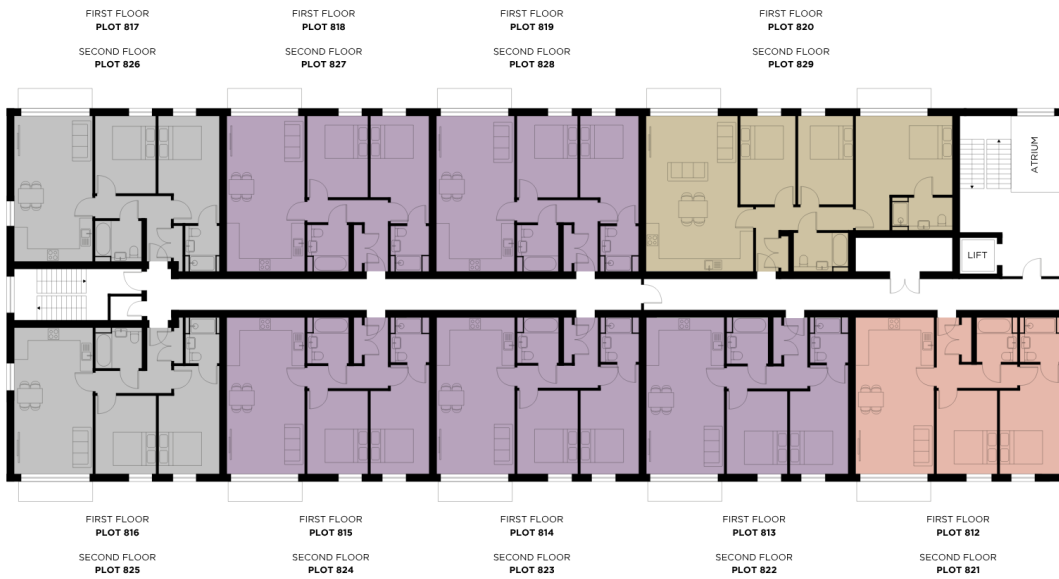
DISCLAIMER: The floor plans, internal images, elevations are intended to give a general indication of the layout of the property. **Lease length:** 6 months **Students allowed:** No **Pets allowed:** No

Contact Us

Heyford Park Residential
Dorchester Regeneration Heyford
Park House, 52 Camp Road
Upper Heyford
OX25 5HD
T: +44 (0) 1869 238 200
E: lettings@dorchestergrp.com



FIRST & SECOND FLOOR



● PLOT 816/817/825/826
2 BEDROOMS - 695FT²

LIVING / KITCHEN / DINING 3.6M X 6.7M (11'10" X 22'0")	BATHROOM 2.1M X 1.9M (6'11" X 6'3")
BEDROOM 1 2.7M X 4.9M (8'10" X 16'1")	EN SUITE 1.5M X 2.1M (4'11" X 6'11")
BEDROOM 2 2.8M X 3.5M (9'2" X 11'6")	

● PLOT 813/814/815/818 / 819 / 822 / 823 / 824 / 827 / 828
2 BEDROOMS - 714FT²

LIVING / KITCHEN / DINING 3.5M X 7.1M (11'6" X 23'4")	BATHROOM 2.1M X 1.9M (6'11" X 6'3")
BEDROOM 1 2.7M X 4.9M (8'10" X 16'1")	EN SUITE 1.7M X 2.1M (5'7" X 6'11")
BEDROOM 2 2.7M X 3.7M (8'10" X 12'2")	

● PLOT 812 / 821
2 BEDROOMS - 727FT²

LIVING / KITCHEN / DINING 3.5M X 7.1 (11'6" X 23'4")	BATHROOM 1.9M X 2.1M (6'3" X 6'11")
BEDROOM 1 2.9M X 4.9M (9'6" X 16'1")	EN SUITE 1.9M X 2.1M (6'3" X 6'11")
BEDROOM 2 2.7M X 3.7M (8'10" X 12'2")	

● PLOT 820 / 829
3 BEDROOMS - 993FT²

LIVING / KITCHEN / DINING 4.2M X 7.1M (13'9" X 23'4")	BEDROOM 3 2.5M X 4.1M (8'2" X 13'4")
BEDROOM 1 4.4M X 5.3M (14'5" X 17'5")	BATHROOM 2.5M X 1.7M (8'2" X 5'7")
BEDROOM 2 2.5M X 4.1M (8'2" X 13'4")	EN SUITE 2.8M X 1.5M (9'2" X 4'11")